



NASH

PLANT GROUP

Sales & Hire

1 3 0 0 6 2 7 4 7 4

Performance and productivity

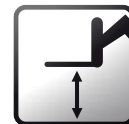
- Best load capacities
- Rear axle lock and tilt corrector in standard
- Flow Sharing in standard enabling a simultaneous and proportional control of 4 movements

Powerful and robust

- High strength monoblock chassis
- Rough terrain capacities
- Hydrostatic transmission and inching pedal

Comfort and ergonomomy

- Driving position reducing fatigue at work
- LMI easy to read including automatic cut off dangerous movements
- High safety cab
- Smart control 4 in 1 Joystick



Placing height : 16.7m



Maximum lift capacity :
4000 kg

Haulotte 
GROUP

More than lifting



HTL 4017



TELEHANDLER

Placing height : 16.7m

Maximum lift capacity : 4000 kg



PERFORMANCES

Maximum lift capacity	4000 kg
Lift capacity to full height	2000 kg
Lift capacity at full reach	700 kg
Maximum fork height	16.7 m
Reach at maximum fork height	2.4 m
Maximum forward reach	12.85 m



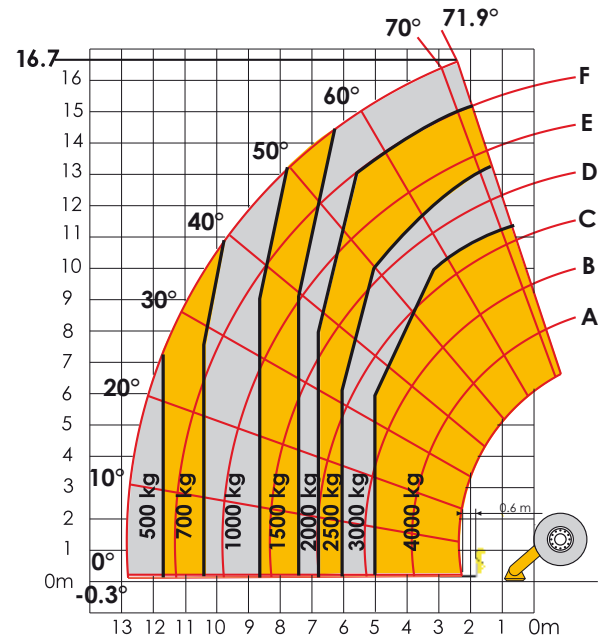
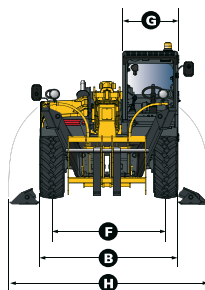
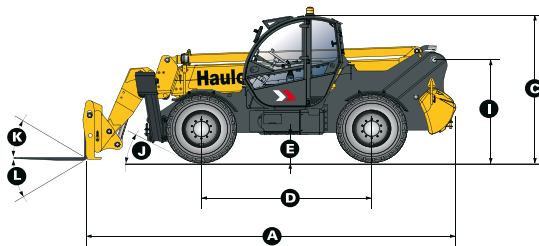
DIMENSIONS

A Length	6.7 m
B Width	2.43 m
C Height	2.6 m
D Wheelbase	2.89 m
E Ground clearance	50 cm
F Track width	1.93 m
G Cab width	0.96 m
H Overall width - stabilizers down	3.34 m
I Height to high boom pivot	1.75 m
J Approach angle	29 °
K Upper rotation of forks	18 °
L Lower rotation of forks	104 °
Weight with forks	12170 kg
Tyres type	18 - 22,5 TMR4



ENGINE

Engine model	PERKINS
Engine Capacity	4400 cm3
Engine power output	70 kW
Engine torque	392 Nm
Transmission type	Hydrostatic
Fuel tank	130 l
Engine oil	110 l



STANDARD EQUIPMENT

- Backlighted e-tronic dashboard
- Hydrostatic transmission
- 4 wheel drive and steer
- Fuel filter with water separator
- Simultaneous and proportional controls for boom / telescopic arm / excavation and accessories movements
- Safety valves on hydraulic jacks
- Auxiliary hydraulic system
- Cut-off of dangerous movements when overloaded
- Tilt corrector: ±10°
- ROPS/FOPS cabin with heating and ventilation
- Hydraulic rear axle locking

OPTIONS AND ACCESSORIES

- Winches
- Jibs
- Forks
- Buckets
- Cold Weather Package
- Biodegradable oil
- Cold environment oil
- Hot environment oil
- Air conditioning
- Working lights
- Metal windscreen protector (FOPS)
- Tools carriage with integrated hook

