



PANORAMIC P38.13



**PERFORMANCE AND FEATURES**
**P38.13**
**PERFORMANCE**

Total unladen weight (kg)	8850
Maximum capacity (kg)	3800
Lifting height (m)	12,6
Maximum reach (m)	8,7
Maximum operating height (m)	11
Maximum operating reach (m)	3
Capacity at maximum height (kg)	3500
Capacity at maximum reach (kg)	800
Lateral boom movement (mm)	+/- 340
Tilting correction (%)	+/- 10
Boom sections	3

**POWERTRAIN**

Turbo motor	Deutz TD2.9
Displacement/cylinders	2900/4
Engine Power (kW/HP)	55,4/75
Anti-pollution technology	EURO IIIB, DOC
Reversible fan	-
Maximum speed (km/h)	33
Fuel tank (l)	140
AdBlue tank (l)	-
Hydrostatic transmission	● - 2V
EPD	-
Axles	Portal
Reduction hub	RR640
Machine brakes	Dry disc
Automatic parking brake	●

**HYDRAULIC**

Hydraulic pump	Load Sensing
Flow rate/pressure (l/min – bar)	115 - 210
Hydraulic tank	105
Hydraulic outlet at the top of the boom	●
Rear hydraulic outlets	○

**CAB**

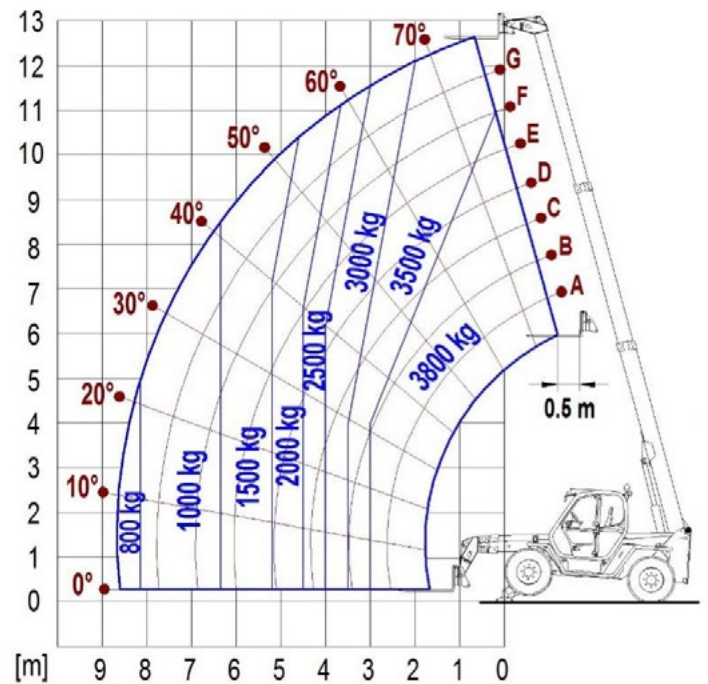
Cab configuration	2004 Cab
MCDC	Light
FOPS LIV II cab	●
ROPS cab	●
Cab commands	2 Levers
Tilting Cab	-
Reverse shuttle	Finger touch

**CONFIGURATION**

Cab suspension	-
Boom suspension	○
Suspension on axles	○
Work headlights on cab	○
Sun blind	○
Tac-lock	●
Provision for a platform	○
Two floating forks	●
Inching-Control	●
Four-wheel drive	●
Four-wheel steering	●
Three steering modes	●
Standard tyres	405/70-20"
Optional tyres	-
Stabilisers	Narrow
Turret rotation	-
Type approval as an agricultural tractor	-
Approval with PNEUMATIC braking	-
Approval with HYDRAULIC braking	-
PTO	-
3-point linkage	-

**DIMENSION**

Width (mm)	2220
Height (mm)	2440
Length (mm)	5240
Wheelbase (mm)	2750



P38.13

## GLOSSAR

## SCR

**Selective Catalyst Reduction**, solution used for the reduction of NOx in the exhaust gases through the injection of a liquid - UREA (AdBlue) - into the exhaust gases.

## DPF

**Diesel Particulate Filter**, a solution used to reduce fine particle emissions in exhaust gases

## DOC

**Diesel Oxidation Catalyst**, a solution used to reduce carbon monoxide (CO) and hydrocarbons in exhaust gases

## EGR

**Exhaust Gas Recirculation**, a solution used to reduce NOx in exhaust gases by recirculating gas inside the combustion chamber of the engine.

## 1-2V

1 or 2 speed **Merlo gearbox**

## CVTronic

**Continuous variation Merlo gearbox**, for constant acceleration without loss of torque

## EPD

**Eco Power Drive**, Merlo electronically-controlled hydrostatic transmission Electronic, enables effective RPM management in order to reduce overall fuel consumption by the machine

## EPD Plus

In addition to the **EPD** Control, it is also possible to work using Speed Control (maintaining a constant travel speed) and Heavy Load (management of RPM in order to maximise performance for tasks such as: bucketing operations, heavy duty unloading, etc.)

## EPD Top

In addition to the **EPD Plus** control function, this enables the RPM to be managed directly using the joystick

## Gear

**Fixed displacement pump with gears**, combined with an open centre hydraulic distributor

## LS

Variable displacement pump with **Load Sensing** control, combined with a closed centre hydraulic distributor

## LS+FS

Variable displacement pump with **Load Sensing** control, combined with a closed centre hydraulic distributor equipped with solenoid valves and **Flow Sharing** control.

## Kabine ECO/PREMIUM

**MODULAR** type cabin with simplified or PREMIUM equipment

## MCDC

Merlo Dynamic Load Control, electronic control of the machine's anti-overflow system.

• **Light**: Simplified version; • **Complete**: Version with display in cab.

## FOPS

Falling object protective structure, the system which shields the operator from heavy objects falling onto the cab. Two levels:

• **FOPS Liv I**: Object with a weight of 45 kg falling from 3 metres • **FOPS Liv II**: Object with a weight of 227 kg falling from 5.2 metres

## ROPS

**Roll-over protection system** (or roll-over protection structure), the system that protects the operator if the vehicle rolls over

## Finger Touch

Driving direction inversion system mounted on the steering column

## Dual Reverse

Dual driving direction inversion system, on both the steering column and the joystick

## Tac-lock

Hydraulic attachment clamping system controlled from the cab



**MERLO S.P.A.**

Via Nazionale, 9  
12010 S. Defendente di Cervasca  
(Cuneo) Italia

Tel. +39 0171 614111

Fax +39 0171 684101

[info@merlo.com](mailto:info@merlo.com)

[www.merlo.com](http://www.merlo.com)



DS\_P3813\_1117\_XG