



XGA20ACE

MOBILE ELEVATING WORK PLATFORM

Comply with AS/NZS/ANSI/CE



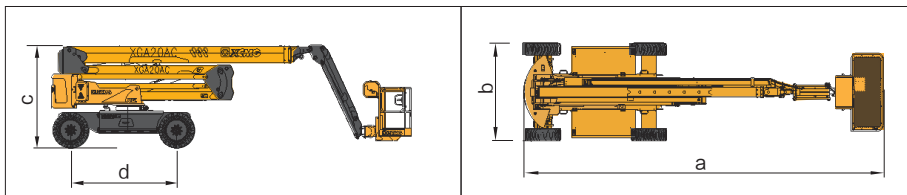
XGA20ACE

MOBILE ELEVATING WORK PLATFORM

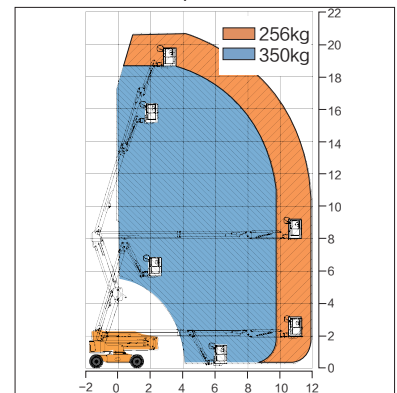
Main Features

- Compact design for ease of transport
- AC pump control and proportional drive, lift and lowering for smooth operation
- AC electric-drive walking, longer working hours, strong drive ability, exceptional battery life
- Various accessories & options(Airline, AC power, Lithium battery, etc.)
- Tight turning radius allows access in and around confined work areas to increase productivity

Product Parameters



Work Curve Graph



Item	Unit	XGA20ACE
a Overall Length	mm	8490
b Overall Width	mm	2490
c Overall Height	mm	2380
d Wheel Base	mm	2500
Max. Working Height	m	20.7
Max. Platform Height	m	18.7
Max. Working Range	m	11.98
Max. Load Capacity	kg	256/350
1st Boom luffing Range	°	0~+72
2nd Boom luffing Range	°	0~+73
Fly Jib Luffing Range	°	-64~+70
Rotation Angle of Turntable	°	360°(Continue)
Max. Tail Wagging	mm	565
Platform Size	mm	1800x760
Rotation Angle of Platform	°	160
Total Weight	kg	9100
Max. Travel Speed	km/h	4.8
Mini. Turning Radius	m	5
Mini. Ground Clearance	mm	300
Max. Grade Ability	%	45
Tire Specification	—	830x285 / (315/55D20)
Battery Specification	V/Ah	48/420 (DC)
Main Motor Specification	kw/V	12/32 (AC)
Drive Motor Specification	kw/V	3.3/32 (AC)

XCMG Australia

Head Office: XCMG Mining Equipment Australia Pty Ltd

Tel: 04 1159 1394

Sales Email: royrossini@xcmg.com duhui2@xcmg.com

Add: Level 10 185 Victoria Square, Adelaide SA5000